



verfront

W/O  
WATERSTOP,  
TYP 3154

#6@12"

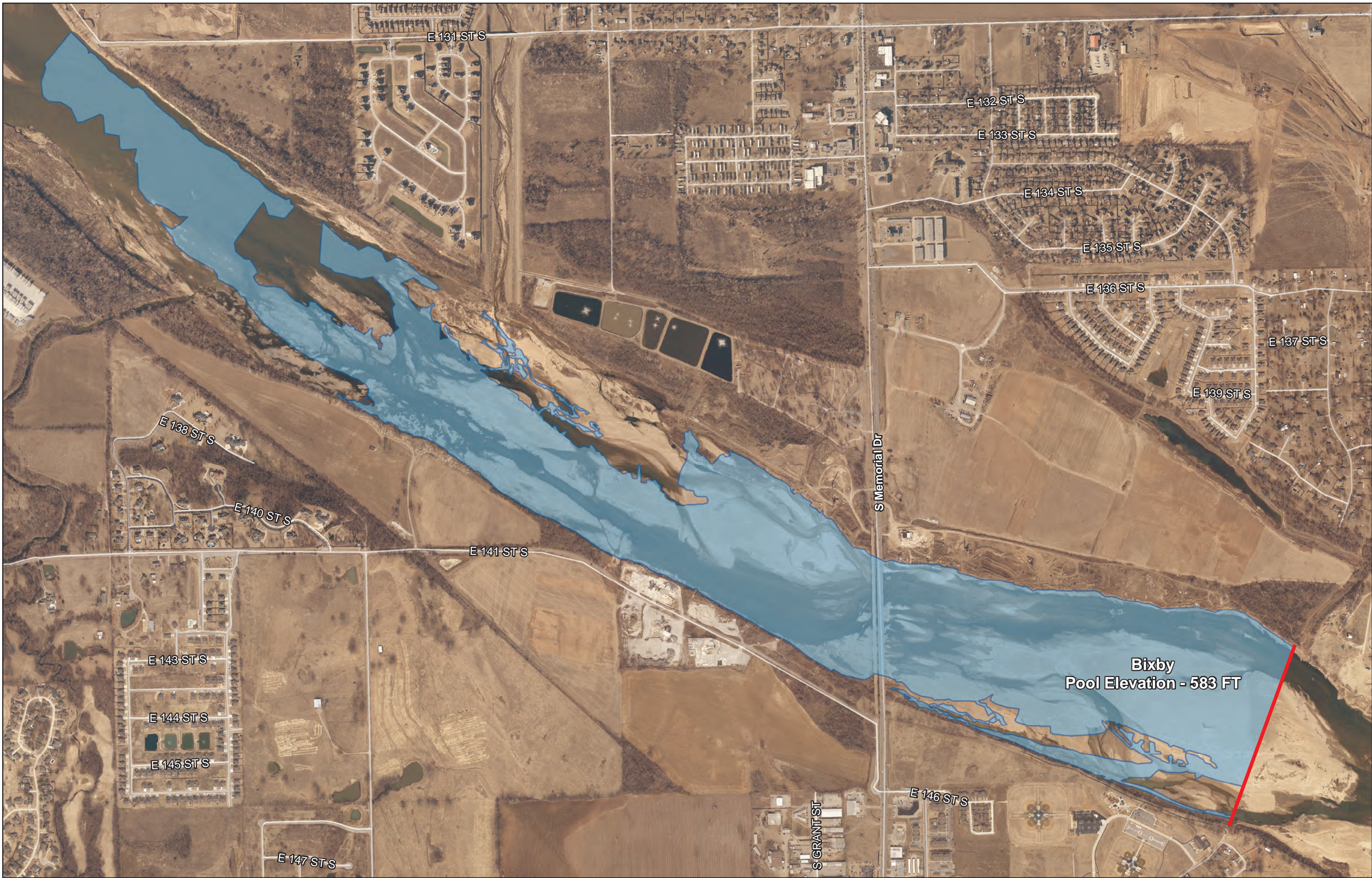
#6@12"  
T&B, STAG

Zink Lake Riverfront

18-INCH MIN  
STRUCTURE

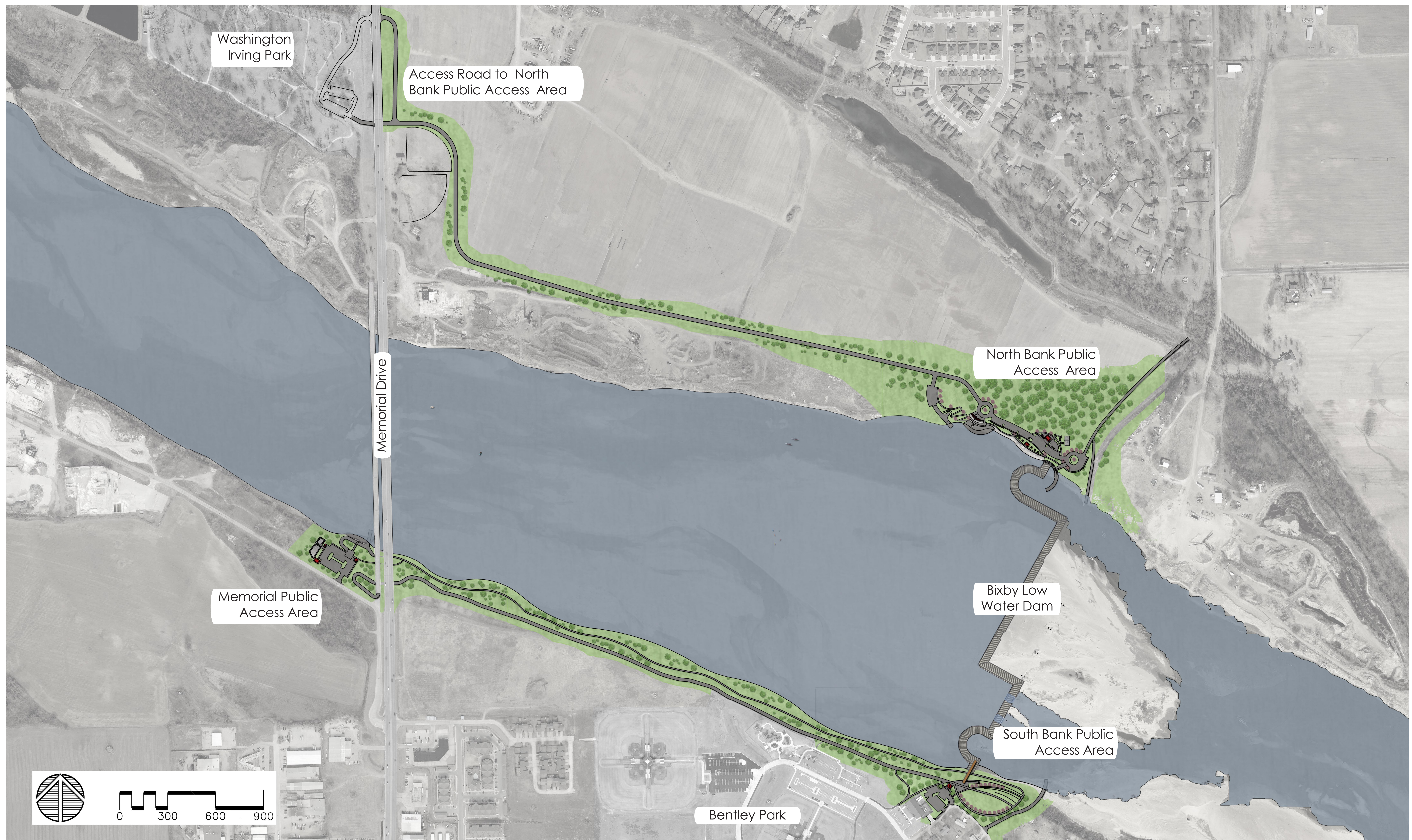
DETAIL





**Bixby  
Pool Elevation - 583 FT**

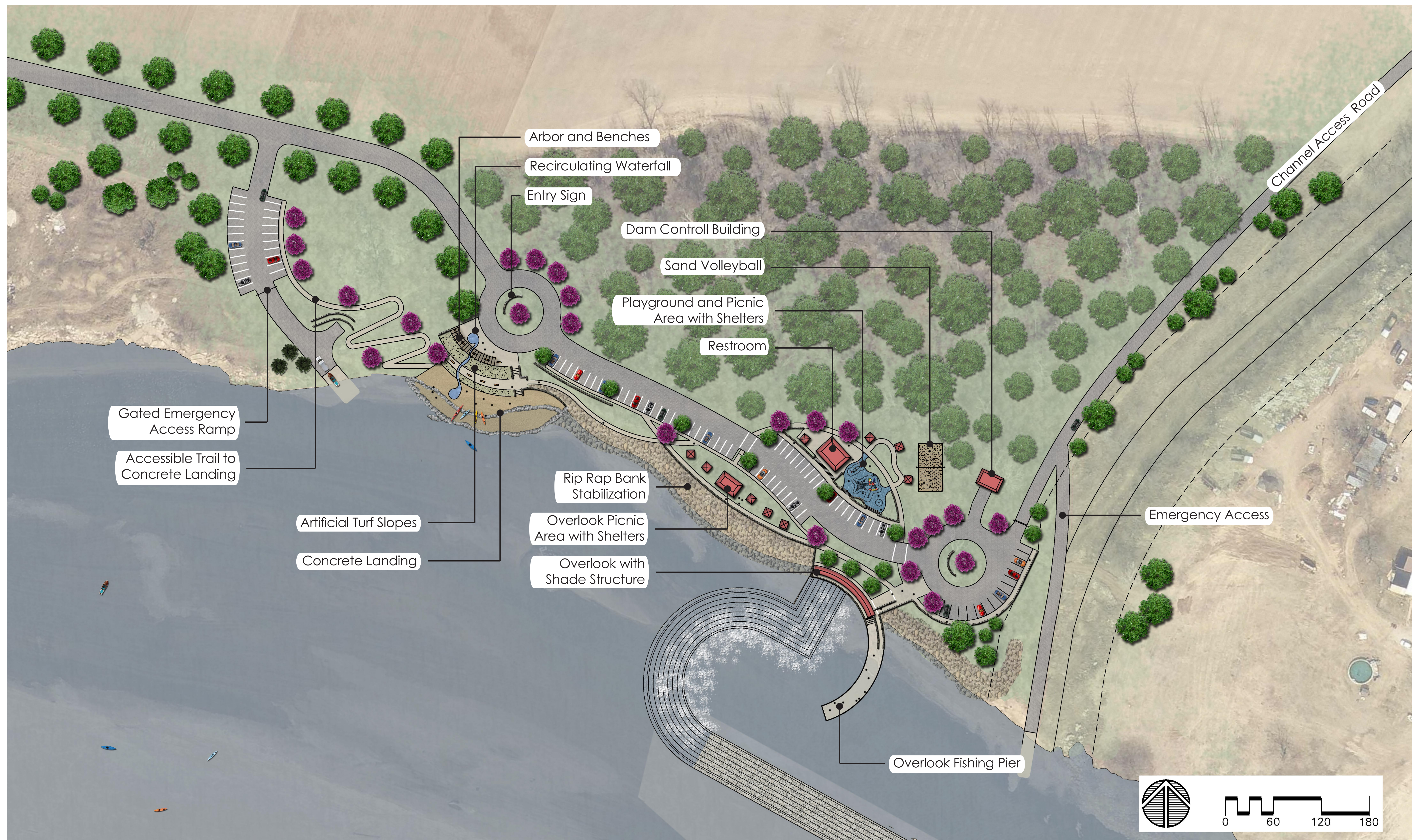




**Bixby Low Water Dam**  
**Overall Plan**

APRIL 2015









LANDPLAN  
CONSULTANTS  
INCORPORATED

1110 West 23rd  
Tulsa, OK 74107  
(918) 584-6464

Seal:

**BIXBY NORTH DAM**  
Bixby, Oklahoma  
**PUBLIC ACCESS**

Revisions:


North

Design

Drawn

Checked

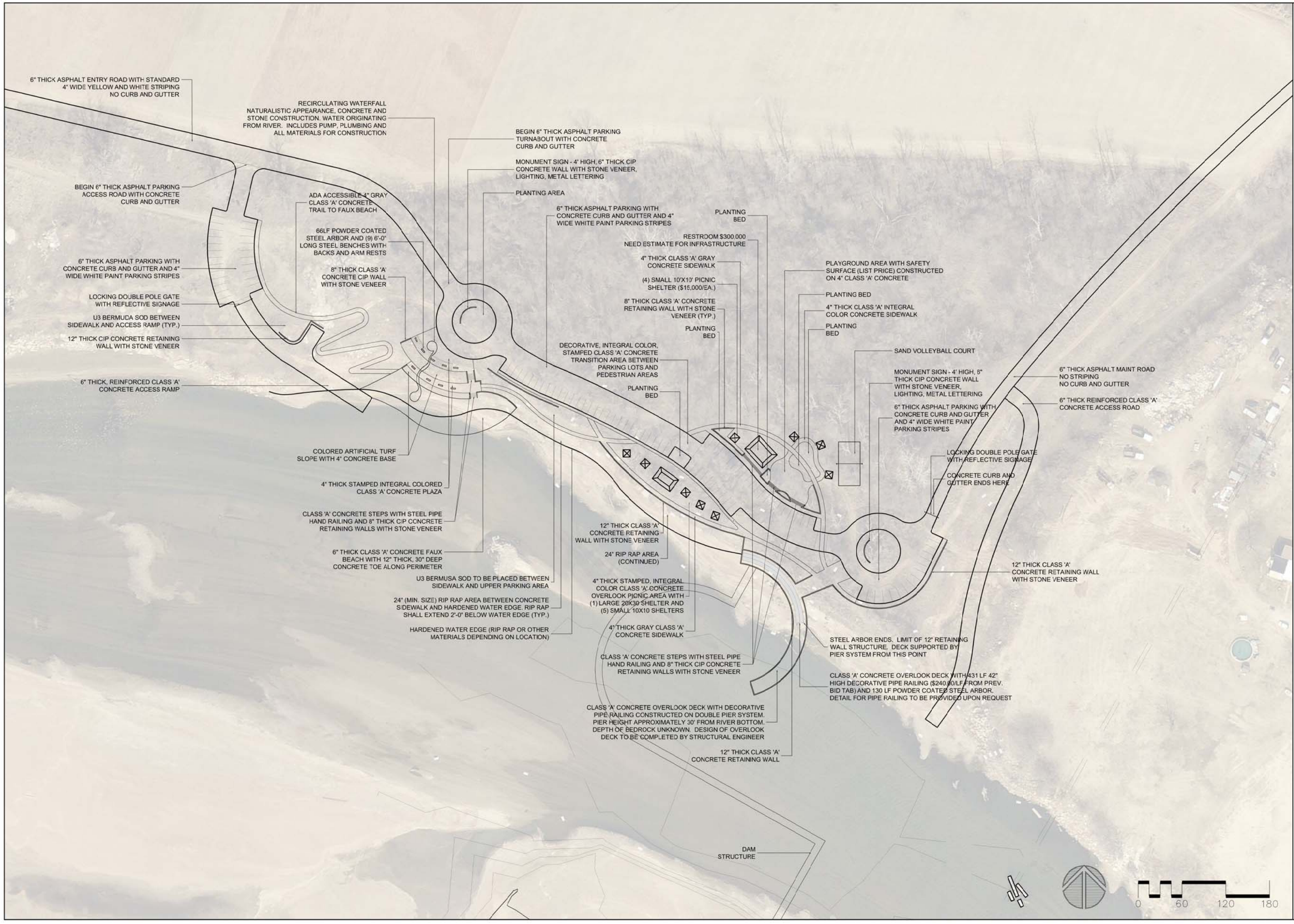
Approved



Sheet:

1 of #

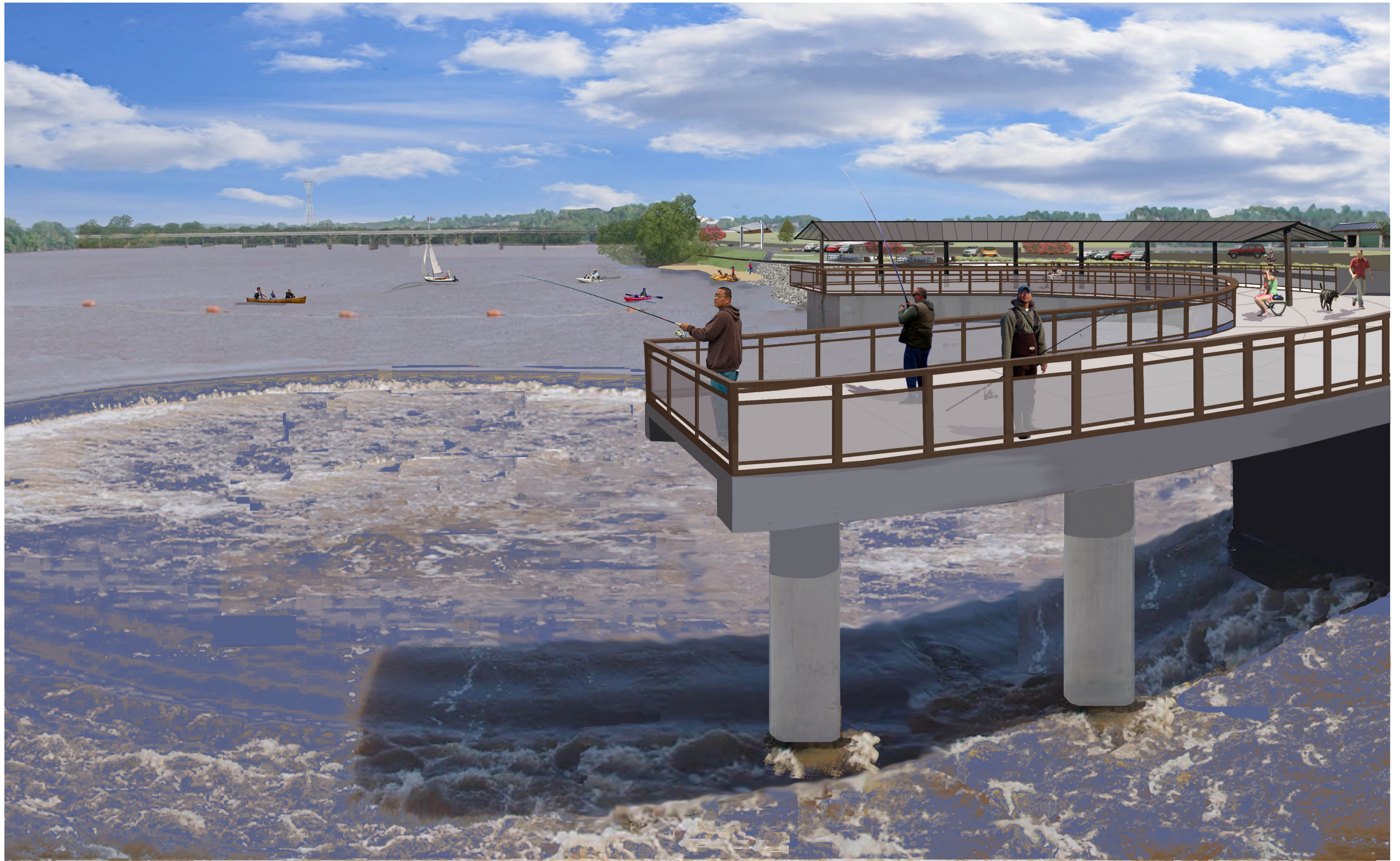
F:\551-AR LWD Schematic\Schematic Designs\Bixby\551-Bixby BaseESTIMATOR.dwg, 1, 3/16/2015 12:07:07 PM















**LANDPLAN CONSULTANTS INCORPORATED**  
 1110 West 23rd  
 Tulsa, OK 74107  
 (918) 584-6464

Seal:

**BIXBY WASHINGTON  
 IRVING/NORTH PARK ACCESS  
 Bixby, Oklahoma  
 PUBLIC ACCESS**

Revisions:


North

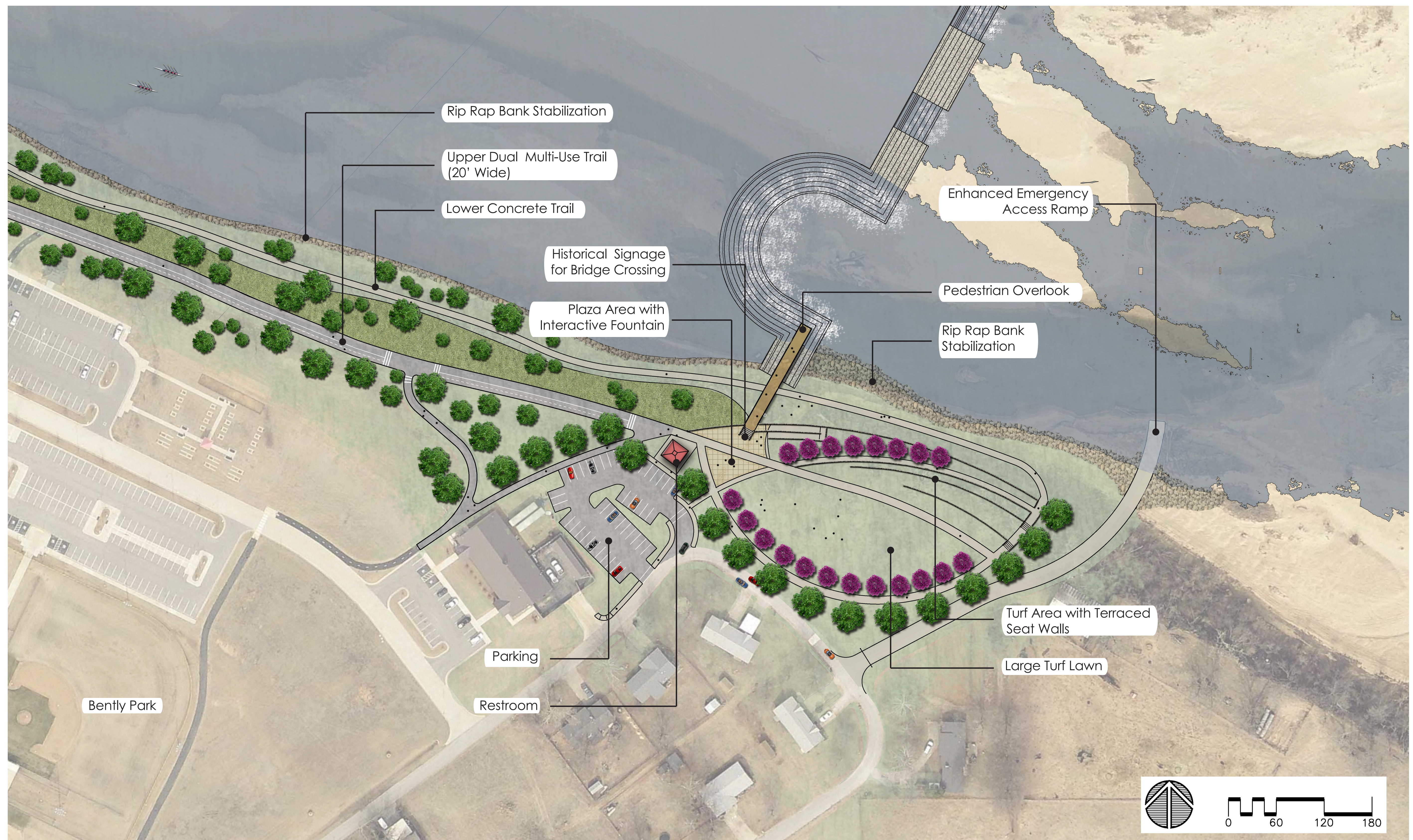
Design	
Drawn	
Checked	
Approved	



Sheet: **4** of #











LANDPLAN  
CONSULTANTS  
INCORPORATED

1110 West 23rd  
Tulsa, OK 74107  
(918) 584-6464

Seal:

**BIXBY SOUTH DAM**  
Bixby, Oklahoma  
**PUBLIC ACCESS**

Revisions:


North

Design  
Drawn  
Checked  
Approved



Sheet: **2** of #

F:\1551-AR LWD Schematic\Schematic Designs\Bixby\1551-Bixby BaseESTIMATOR.dwg, 2, 3/16/2015 12:34:22 PM

UPPER TRAIL -  
(20' WIDE) 3" THICK ASPHALT WITH FLUSH INTEGRAL  
COLOR (COACHELLA SAND) CLASS 'A' CONCRETE  
CURBS. TYPE A AGGREGATE BASE MATERIAL IS  
TYPICALLY 6" THICK AND EXTENDS 1' WIDER THAN  
TRAIL EDGES (TYP.) FOR ASPHALT TRAILS

LOWER TRAIL  
(8' WIDE) 4" THICK CLASS 'A' CONCRETE

HARDENED LAKE EDGE  
ELEV. 583

24" (MIN.) RIP RAP BETWEEN LOWER TRAIL AND WATERS  
EDGE. RIP RAP SHALL EXTEND 24" BELOW THE WATER  
ELEVATION

PROPOSED DAM LOCATION

CLASS 'A' CONCRETE BRIDGE STRUCTURE WITH  
OVERLOOK. INCLUDES 42" HIGH DECORATIVE PIPE  
RAILING (\$240/LF). BRIDGE, ABUTMENT AND PIER DESIGN  
TO BE COMPLETED BY STRUCTURAL ENGINEER

U3 BERMUDA SOD BETWEEN UPPER  
AND LOWER TRAIL AND IN OPEN  
AREAS BETWEEN SIDEWALK PAVING

EXISTING EMERGENCY ACCESS RAMP

6" THICK ASPHALT PARKING LOT WITH CLASS 'A'  
CONCRETE CURB AND GUTTER AND 4" WIDE WHITE  
PARKING STRIPES (47 SPACES). INCLUDES (2) ADA  
ACCESSIBLE PARKING SPACES AND SIGNAGE

NATURAL TURF AREA WITH TERRACED  
8" THICK CLASS 'A' CONCRETE SEAT  
WALLS WITH STONE VENEER

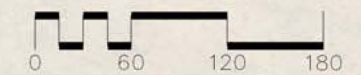
25'X25' CUSTOM RESTROOM STRUCTURE

LARGE NATURAL TURF AREA

CLASS 'A' STAMPED AND COLORED  
DECORATIVE CONCRETE PLAZA AREA  
WITH FOUNTAIN AND HISTORICAL SIGNAGE

4" THICK GRAY CLASS 'A' CONCRETE  
SIDEWALK

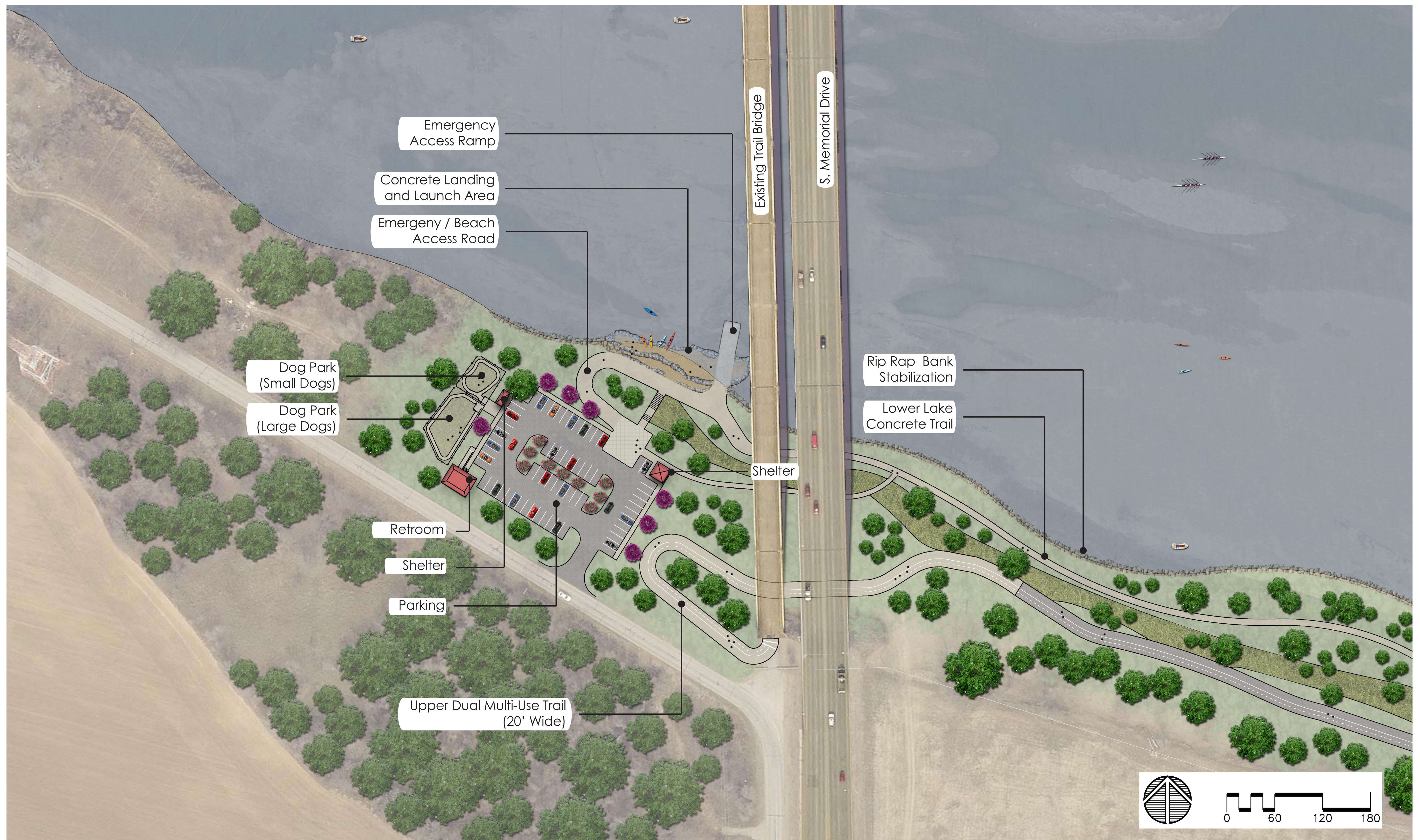
DOUBLE POLE GATE WITH  
REFLECTIVE SIGNAGE



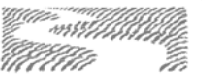












LANDPLAN  
CONSULTANTS  
INCORPORATED

1110 West 23rd  
Tulsa, OK 74107  
(918) 584-6464

Seal:

**BIXBY MEMORIAL ACCESS**  
Bixby, Oklahoma  
**PUBLIC ACCESS**

Revisions:


North

Design

Drawn

Checked

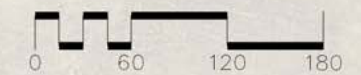
Approved



Sheet:

3 of #

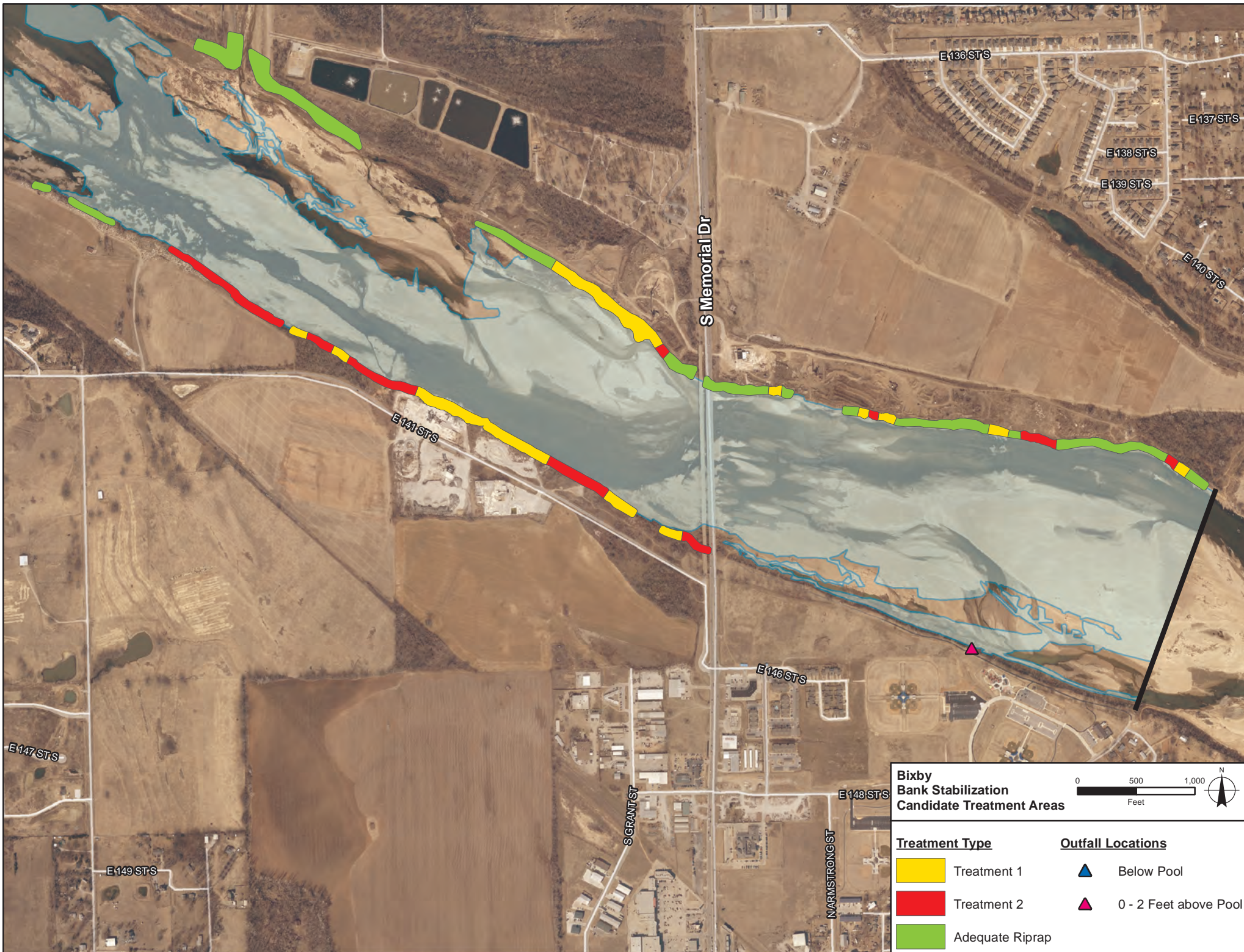
F:\551-AR LWD Schematic\Schematic Designs\Bixby\551-Bixby BaseESTIMATOR.dwg, 3, 3/6/2015 12:42:20 PM



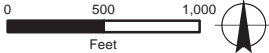






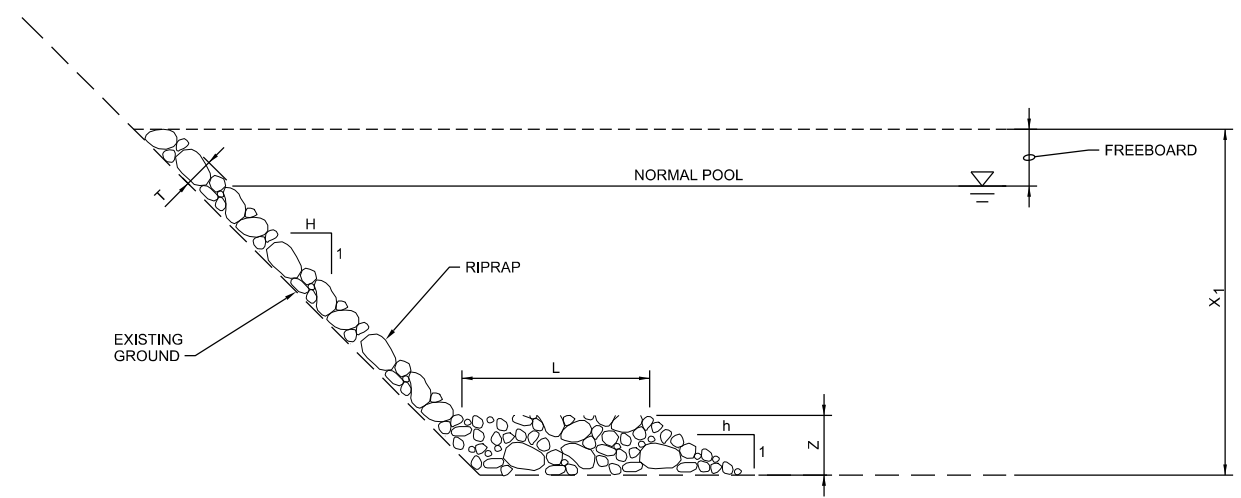


**Bixby  
Bank Stabilization  
Candidate Treatment Areas**



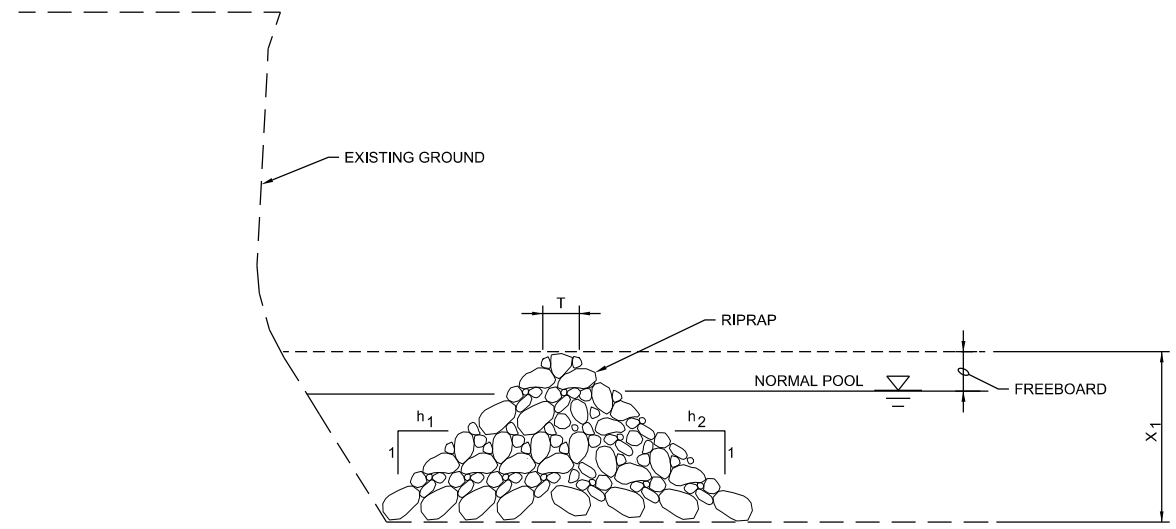
<u>Treatment Type</u>		<u>Outfall Locations</u>	
<span style="display:inline-block; width:15px; height:15px; background-color:yellow; border:1px solid black;"></span>	Treatment 1	<span style="display:inline-block; width:0px; height:0px; border-left:5px solid transparent; border-right:5px solid transparent; border-bottom:8px solid blue;"></span>	Below Pool
<span style="display:inline-block; width:15px; height:15px; background-color:red; border:1px solid black;"></span>	Treatment 2	<span style="display:inline-block; width:0px; height:0px; border-left:5px solid transparent; border-right:5px solid transparent; border-bottom:8px solid red;"></span>	0 - 2 Feet above Pool
<span style="display:inline-block; width:15px; height:15px; background-color:green; border:1px solid black;"></span>	Adequate Riprap		





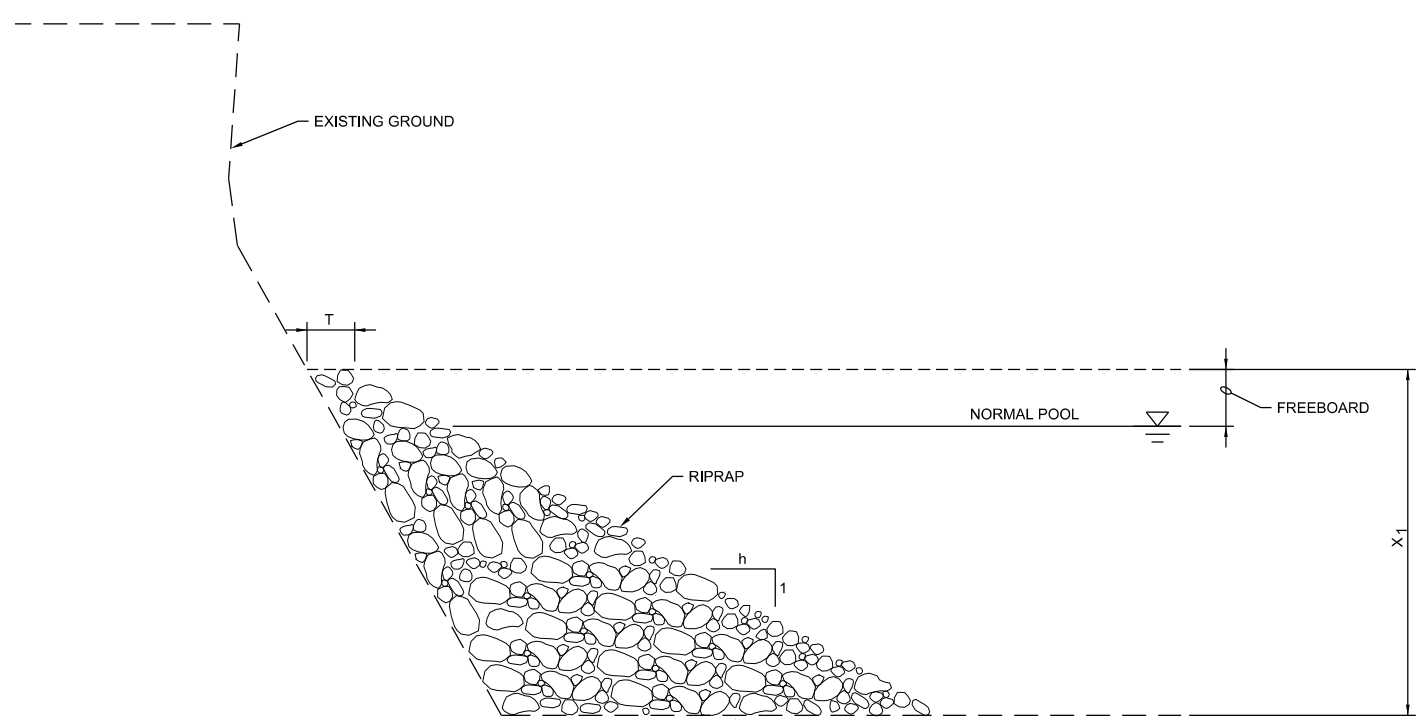
**REVETMENT RIPRAP WITH LAUNCHABLE STONE TOE**

**1** TREATMENT  
NTS



**LONGITUDINAL PEAKED STONE TOE**

**3** TREATMENT  
NTS



**STONE TOE WEDGE**

**2** TREATMENT  
NTS

**NOTES:**

1. ALL TRASH AND WOODY DEBRIS SHOULD BE REMOVED FROM BANK FACE AND TOE WITHIN THE RANGE OF X1 AND THE FOOTPRINT OF TREATMENT PRIOR TO INSTALLING RIPRAP.
2. DIMENSION X1 IS A FUNCTION OF THE TREATMENT LOCATION / STATION ALONG THE RIVER. FOR OTHER TREATMENT DIMENSIONS USED FOR COST-ESTIMATING PURPOSES, REFER TO THE "BANK TREATMENT DIMENSIONS" TABLE BELOW.

**BANK TREATMENT DIMENSIONS**

COMMON DIMENSIONS FOR ALL TREATMENTS	
VERTICAL FREEBOARD	2.0 FT
RIPRAP MEDIAN DIAMETER, D50	1.5 FT
TREATMENT THICKNESS (T)	3.0 FT
TREATMENT 1	
STONE TOE THICKNESS (Z)	6.0 FT
STONE TOE LENGTH (L)	12.0 FT
STONE TOE SLOPE (H)	2.0 FT/FT
TREATMENT 2	
WEDGE SLOPE (H)	3.0 FT/FT
TREATMENT 3	
PEAK STONE TOE SLOPE, BANK SIDE (H1)	2.5 FT/FT
PEAK STONE TOE SLOPE, RIVER SIDE (H2)	2.5 FT/FT

**FIGURE 1**  
**BANK STABILIZATION TREATMENTS**  
ARKANSAS RIVER LOW WATER DAMS  
CITY OF TULSA, OKLAHOMA



